

A Full Range of Repair Services

From electronic to mechanical repair services,
up to preventive repairs

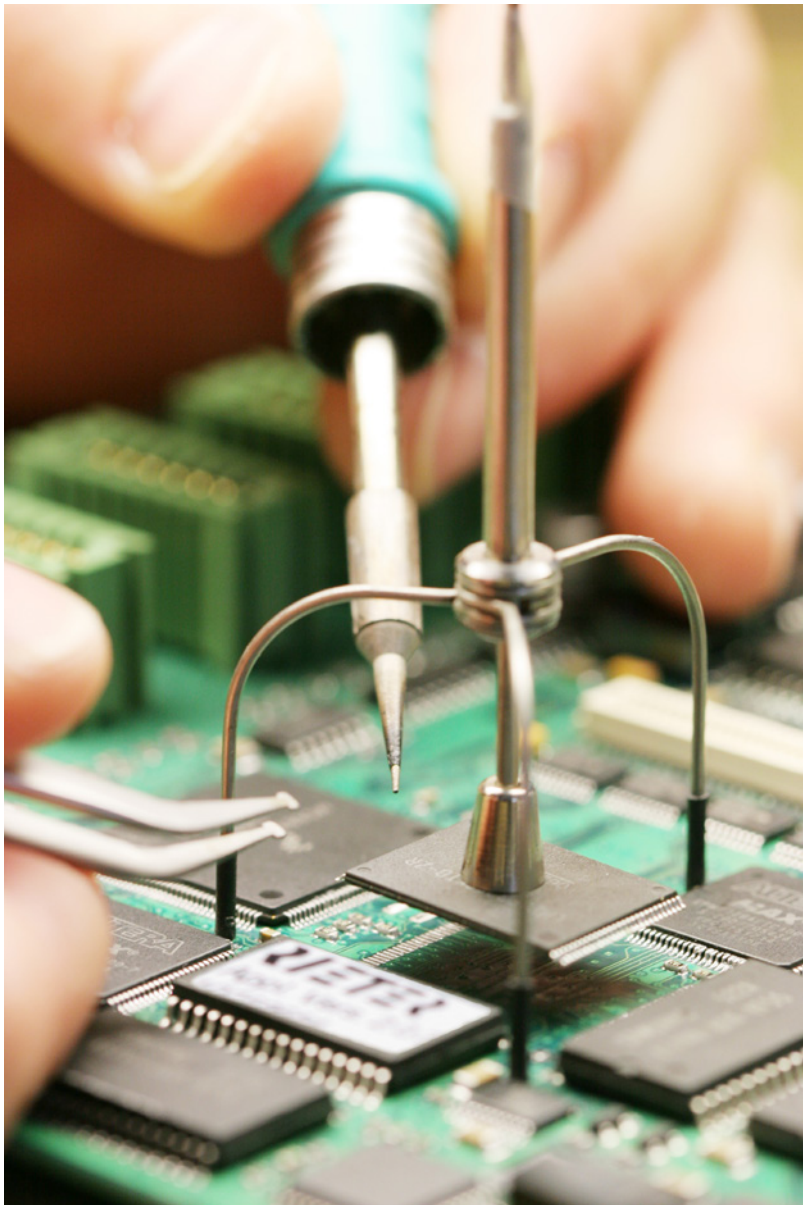
Increase performance and
lifetime of your equipment

Electronic Repairs

For reliable performance

With a wide range of test equipment and software tailored for individual product requirements, Rieter specialists perform all levels of repair. Each electronic device received for repair goes through a careful examination and follows electrostatic discharge procedures. Components are thoroughly and accurately diagnosed and tested under simulated conditions.

Rieter electronic repair specialists are regularly trained on evolving technologies and new Rieter products in one of the core facilities in Switzerland, Germany, and the Czech Republic.



Specialized tools used in electronic repairs

Mechanical Repairs

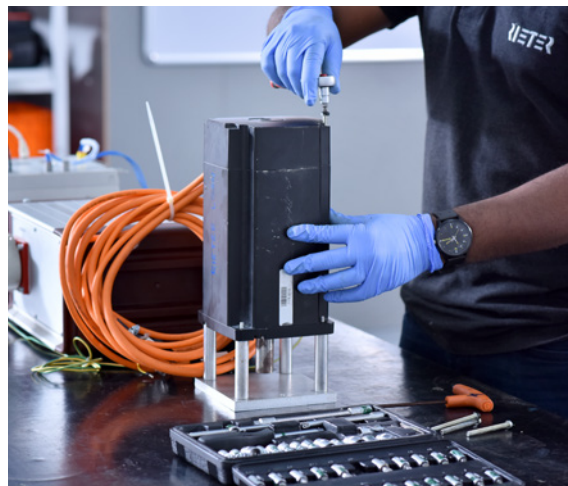
For long-lasting equipment

Mechanical parts are subject to wear and tear in the normal run. Their longevity depends on various factors such as the hours of operation, maintenance and other influences which vary from mill to mill.

Providing unique customized service

Rieter mechanical repair services provide reliable, long-lasting and cost-effective solutions thanks to strict quality standards and rigorous processes such as:

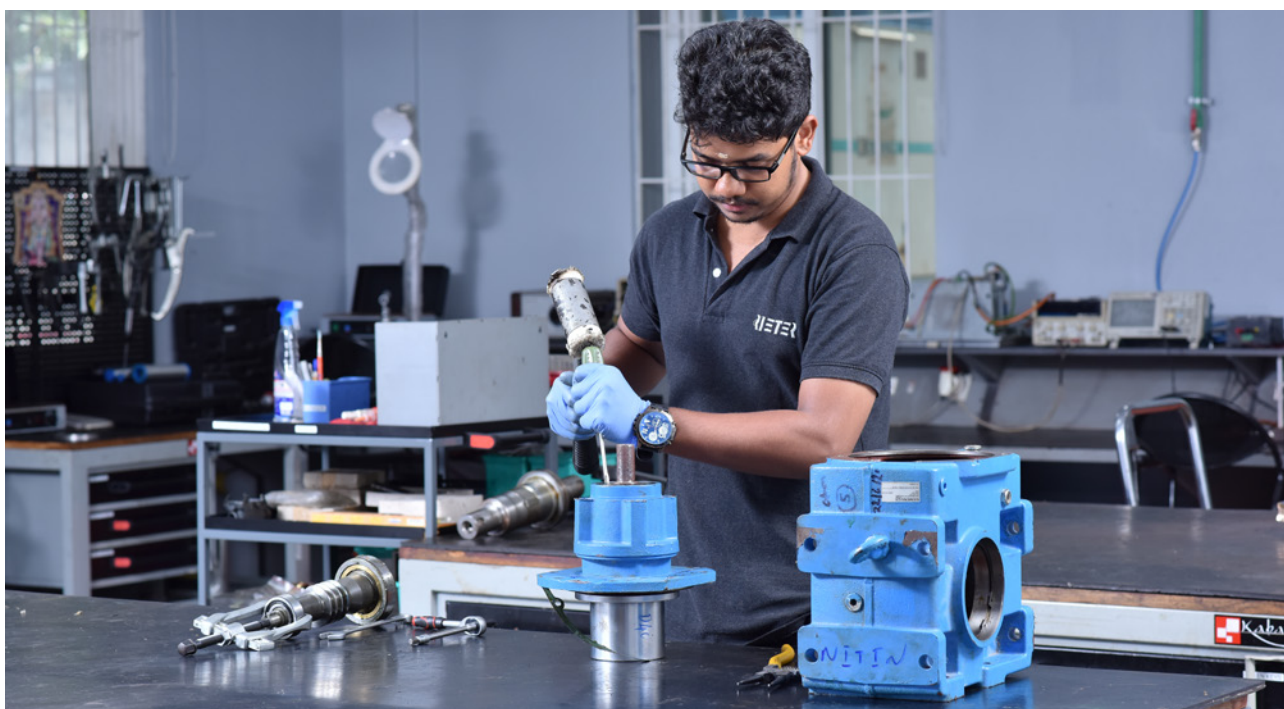
- replacement by original parts
- thorough cleaning of internals
- state-of-the-art test jigs for inspection to conform with Rieter standards



A Rieter service technician is preparing a draw frame servo motor for testing.

Improving yarn quality

Throughout the yarn manufacturing process, gear boxes are crucial to achieve a consistent or even improved yarn quality. For instance in draw frames, the gearbox adjusts the sliver output and in ring spinning it adjusts the yarn draft and twist. Hence, it is of utmost importance to service the gear boxes professionally. We offer this professional service to our customers.

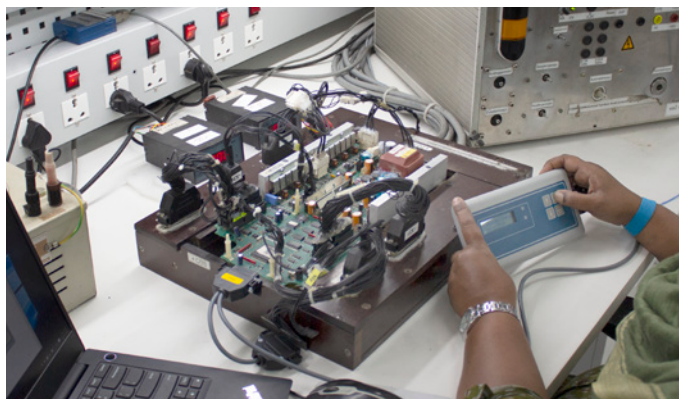


Repair work going on a ring rail gearbox.

Winding Repairs

Broad range of repair products for all Rieter winding machines

Rieter's winding repair service product portfolio ranges from customized preventive repair packages to complete system overhaul solutions for all Rieter winding machines. With the state-of-the-art in-house facility, it can provide the highest quality repairs within the shortest turnaround time, ensuring minimal downtime for the winding machine for the customers.



Proprietary test equipment

State-of-the-art repair service facilities

Rieter offers refurbishment of the critical components in its repair service facilities across the globe. Highly experienced repair service engineers use top-notch industrial-grade parts and components to replace and repair the components in the different functional circuitries within the shortest repair turnaround time. Rieter repairs help minimize machine downtime and restore the original machine performance.

After completion of the refurbishment process, the functionality of the components is analyzed with software-based automated testing instruments. The long-cycle tests are conducted by simulating the actual mill working conditions to ensure machine performance and quality.



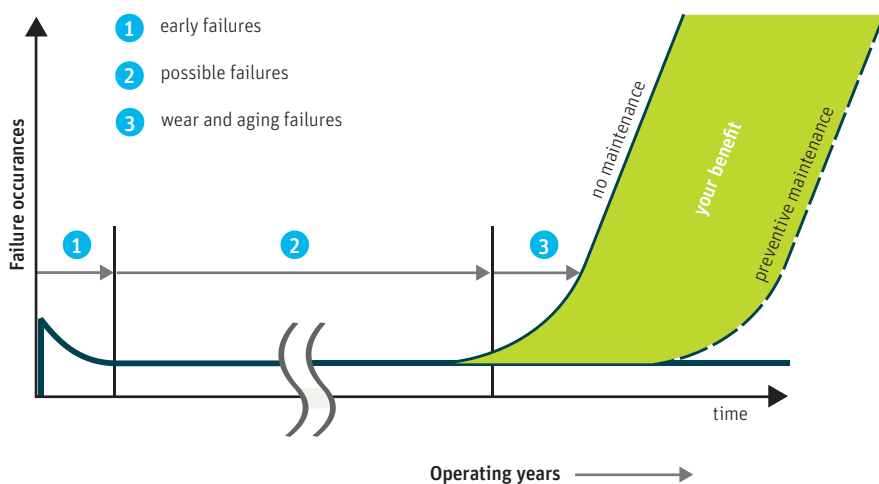
Machine spindle simulator system

Preventive Repairs

For trouble-free operations

Preventive repairs enable mill owners to replace components before an age-related fault occurs. Both electronic and mechanical devices have a predefined lifetime and specific maintenance needs. The lifetime varies depending on ambient conditions like temperature, humidity, dirt, the power supply network and other environmental influences.

Tailor-made maintenance concept



Reducing unplanned downtime

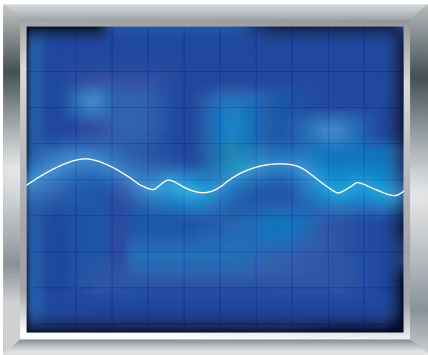
With spinning mills running 24 hours a day, 365 days a year, it is crucial to have an optimal performance of the machines. It is impossible to prevent all break-downs, hence detecting potential failure as early as possible greatly reduces the risk of downtime and the related costs. Through regular preventive repairs carried out by Rieter service specialists, customers benefit from consistently performing equipment.

Increasing product lifetime

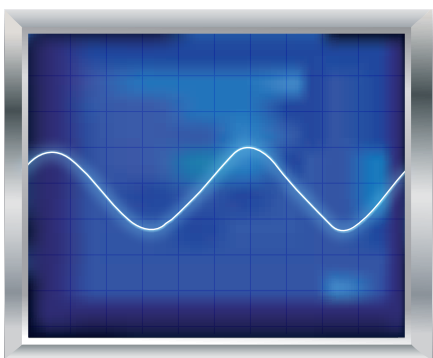
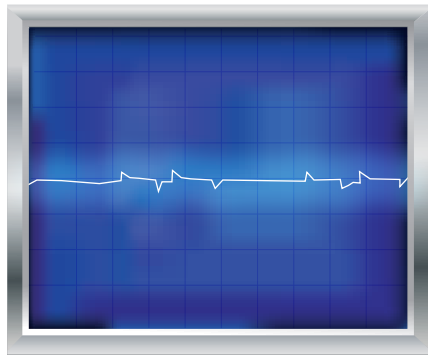
Aging of even the smallest electronic or mechanical component can affect the performance of the complete piece of equipment and results in lower efficiency and productivity. Replacing or upgrading the right component at the right time does not only maximize the reliability of machines, it also increases the entire product lifetime and saves cost.

Rieter preventive repairs include tailor-made maintenance concepts and processes such as cleaning, inspections, upgrading, testing and special reporting.

This service can be planned for the complete overhaul of the installed fleet within a defined time schedule.



Inconsistent performance before preventive repairs

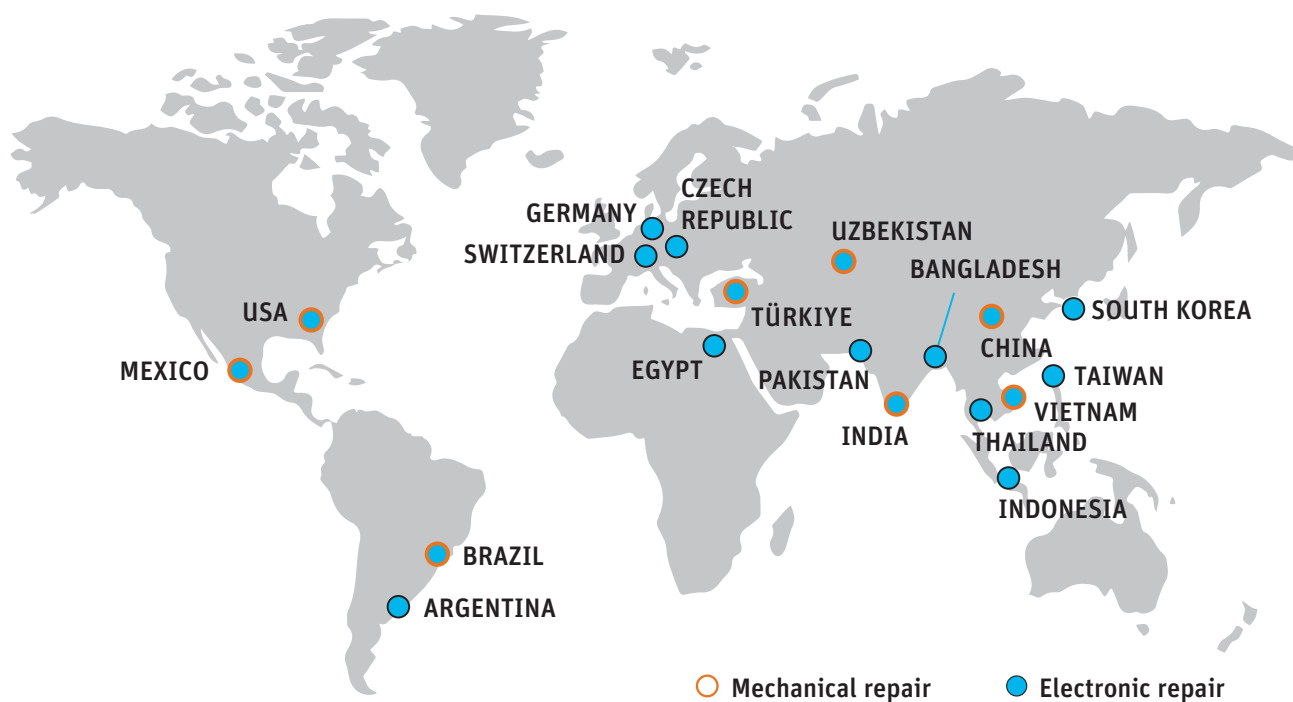


Stable performance after preventive repairs

A Worldwide Network of Repair Centers

On your doorstep

With more than 24 repair service centers located across the globe, customers get immediate support at their doorstep. Each repair center is fully equipped with the necessary specialized tools, testing and calibration systems for best-in-class repair. Our highly qualified repair specialists repair and return the defective devices quickly and professionally to keep the downtime of machines to a minimum. They can also support customers on site.





Rieter Machine Works Ltd.
Klosterstrasse 20
CH-8406 Winterthur
T +41 52 208 7171
F +41 52 208 8320
machines@rieter.com
aftersales@rieter.com

www.rieter.com

Rieter India Private Ltd.
Gat No. 768/2, Village Wing
Shindewadi-Bhor Road
Taluka Khandala, District Satara
IN-Maharashtra 412 801
T +91 2169 664 141
F +91 2169 664 226

**Rieter (China) Textile
Instruments Co., Ltd.**
390 West Hehai Road
Changzhou 213022, Jiangsu
P.R. China
T +86 519 8511 0675
F +86 519 8511 0673

The data and illustrations in this brochure and on the corresponding data carrier refer to the date of printing. Rieter reserves the right to make any necessary changes at any time and without special notice. Rieter systems and Rieter innovations are protected by patents.

2454-v4 en 2310